

M-T 90°C

Multijet Inferential Domestic water meter
for hot water up to 90°C
Operating pressure PN 16



Type M-T QN ... AN 90 ...
For installation in horizontal pipes

Principal characteristics

Hot water meter with EEC pattern approvals
Qn 1,5 – Qn 10 up to 90°C
Metrological Class B (horizontal)

Dry-dial with magnetic coupling

Measuring element is made of high quality plastics for corrosion and temperature resistance, and ensures excellent measuring accuracy

Secure sealing by using o-rings on both the measuring element and meter head ring

8 digit roller including 3 decimals, 1 pointer and star wheel



Type M-T QN ... SAN 90 ...
For installation in vertical pipes
with upward flow

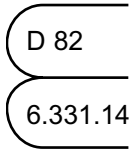


Type M-T QN ... FAN 90 ...
For installation in vertical pipes
with downward flow

www.sensus.com
info.int@sensus.com

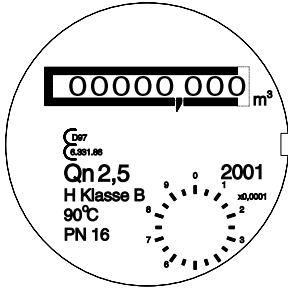


Pattern Approvals

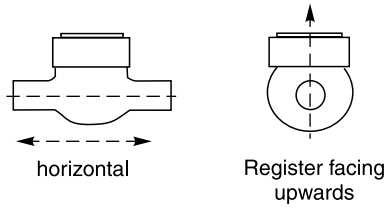


Size QN 1.5 ... 10
Available as
Metrological Class A

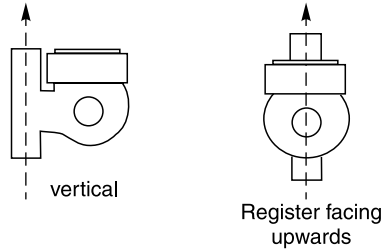
Dial Face



Installation



Horizontal version



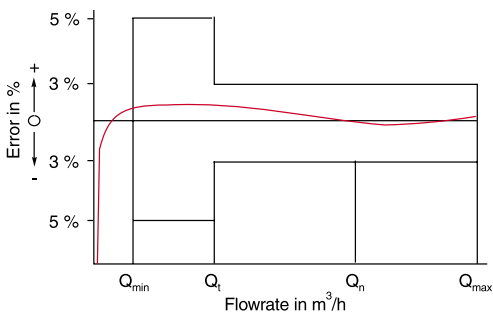
Vertical pipe version

Technical Specifications

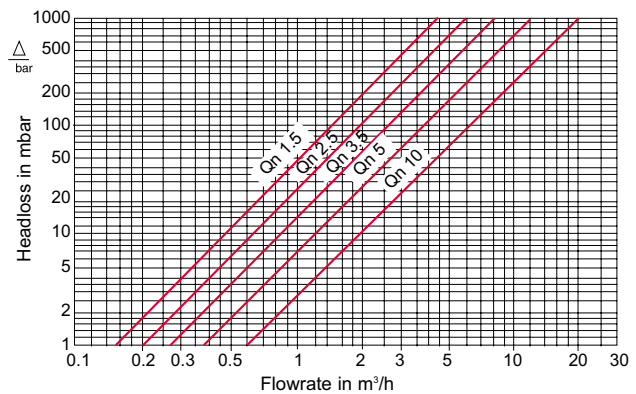
Nominal diameter	QN		1.5	2.5	3.5	6	10
Nominal flowrate	Q _n	m ³ /h	1.5	2.5	3.5	6	10
Maximum flowrate (short duration)	Q _{max}	m ³ /h	3	5	7	12	20
Transitional flowrate	Q _t	l/h	120	200	280	400	800
Minimum flowrate	Q _{min}	l/h	30	50	70	120	200
Head loss at Q _n		bar	0.11	0.18	0.20	0.25	0.25
Flowrate at 1 bar head loss		m ³ /h	4.7	6.0	8.1	12.5	20.5
Register capacity		m ³			00000.000		
Operating pressure		bar	16 (Special 25 bar version available)				
Operating temperature		°C	10 to 130				

Accuracy limits For flowrates between Q_t and Q_{max} ± 3%
For flow rates below Q_t to Q_{min} ± 5%

Typical Accuracy Curve



Typical Head Loss Curve



M-T90°C

Dimensions and Weights

			Type M-T Q _n ... AN 90 R...EB for horizontal installation threaded connection					Type M-T Q _n ... AN 90 DN...EB for horizontal installation flanged connection				
Meter size	Q _n	m ³ /h	1.5	2.5	3.5	5	10	1.5	2.5	3.5	5	10
Connection size	DN	mm	20	20	25	25	40	20	20	25	25	40
		inch	3/4	3/4	1	1	1 1/2	-	-	-	-	-
Tailpiece connection thread ¹⁾	d	inch	R 3/4	R 3/4	R 1	R 1	R 1 1/2	-	-	-	-	-
Meter connection thread ²⁾	D	inch	G 1	G 1	G 1 1/4	G 1 1/4	G 2	-	-	-	-	-
Overall length	l	mm	190	190	260	260	300	190	190	260	260	300
Length with tailpieces	L	mm	288	288	378	378	438	-	-	-	-	-
Height	H	mm	155	155	170	170	190	157	157	178	179	197
Height	h	mm	36.5	36.5	46	46	63	46	46	51	51	68
Width	B	mm	97	97	103	103	140	95	95	101	101	131
Flange diameter	D1	mm	-	-	-	-	-	105	105	115	115	150
Meter weight		~ kg	2.0	2.1	2.9	2.9	5.2	3.5	3.5	4.8	4.8	8
Meter weight with tailpieces		~ kg	2.5	2.6	3.6	3.6	6.5	-	-	-	-	-

			Type M-T Q _n ... SAN 90 R...EB for vertical installation (upward flow)					Type M-T Q _n ... FAN 90 R...EB for vertical installation (downward flow)				
Meter size	Q _n	m ³ /h	1.5	2.5	3.5	5	10	1.5	2.5	3.5	5	10
Connection size	DN	mm	20	20	25	25	40	20	20	25	25	40
		inch	3/4	3/4	1	1	1 1/2	3/4	3/4	1	1	1 1/2
Tailpiece connection thread ¹⁾	d	inch	R 3/4	R 3/4	R 1	R 1	R 1 1/2	R 3/4	R 3/4	R 1	R 1	R 1 1/2
Meter connection thread ²⁾	D	inch	G 1	G 1	G 1 1/4	G 1 1/4	G 2	G 1	G 1	G 1 1/4	G 1 1/4	G 2
Overall length	l	mm	105	105	150	150	200	105	105	150	150	200
Length with tailpieces	L	mm	203	203	268	268	338	203	203	268	268	338
Height	H	mm	155	155	170	170	190	160	160	175	175	195
Height	h	mm	19	19	33	33	30	13	13	22	22	30
Axis distance	A	mm	82	82	94	94	120	100	100	105	105	120
Width	B	mm	97	97	103	103	140	97	97	103	103	140
Meter weight		~ kg	2	2.1	3.3	3.3	5	2	2.1	3.3	3.3	5
Meter weight with tailpieces		~ kg	2.3	2.4	3.8	3.8	6.3	2.3	2.4	3.8	3.8	6.3

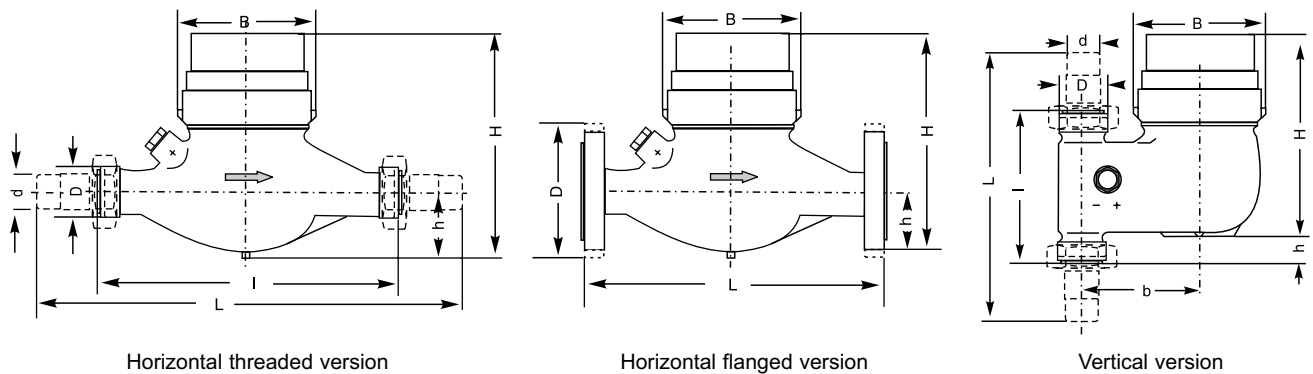
¹⁾ Whitworth tapered thread

R 1/2 " to R 2" according to ISO 7/1 = DIN 2999 Part 1

²⁾ Pipe thread

G 3/4 B to G 1/2 B according to DIN ISO 228/1

Dimension Pictures



Materials

Body	Brass
Head ring	Brass (painted)
Strainer	Plastic
Calibration screw	Plastic
O-rings	EPDM
Measuring chamber	Plastic
Bearing pin	Tungsten carbide
Fanwheel	Plastic
Fanwheel shaft	Tungsten carbide
Magnet holder	Plastic
Magnets	Permanent ceramic magnets
Sealing plate	Brass
Upper magnetic coupling	Plastic / tungsten carbide
Roller counter	Plastic
Dial glass	Plastic

Ordering Information

Multijet M-T water meter		
Horizontal threaded version		
Product code		
Q _n 1,5	AN 90 R 1/2"	EB
Q _n 1,5	AN 90 R 3/4"	EB
Q _n 2,5	AN 90 R 3/4"	EB
Q _n 3,5	AN 90 R 1"	EB
Q _n 5	AN 90 R 1"	EB
Q _n 5	AN 90 R 1 1/4"	EB
Q _n 10	AN 90 R 1 1/2"	EB

Multijet M-T water meter		
Horizontal flanged version		
Product code		
Q _n 1,5	AN 90 R 1/2"	EB
Q _n 1,5	AN 90 R 3/4"	EB
Q _n 2,5	AN 90 R 3/4"	EB
Q _n 3,5	AN 90 R 1"	EB
Q _n 5	AN 90 R 1"	EB
Q _n 5	AN 90 R 1 1/4"	EB
Q _n 10	AN 90 R 1 1/2"	EB

Multijet M-T water meter		
Vertical version (upward flow)		
Product code		
Q _n 1,5	SAN 90 R 3/4"	EB
Q _n 2,5	SAN 90 R 3/4"	EB
Q _n 3,5	SAN 90 R 1"	EB
Q _n 5	SAN 90 R 1"	EB
Q _n 10	SAN 90 R 1 1/2"	EB

Multijet M-T water meter		
Vertical Version (downward flow)		
Product code		
Q _n 1,5	FAN 90 R 3/4"	EB
Q _n 2,5	FAN 90 R 3/4"	EB
Q _n 3,5	FAN 90 R 1"	EB
Q _n 5	FAN 90 R 1"	EB
Q _n 10	FAN 90 R 1 1/2"	EB